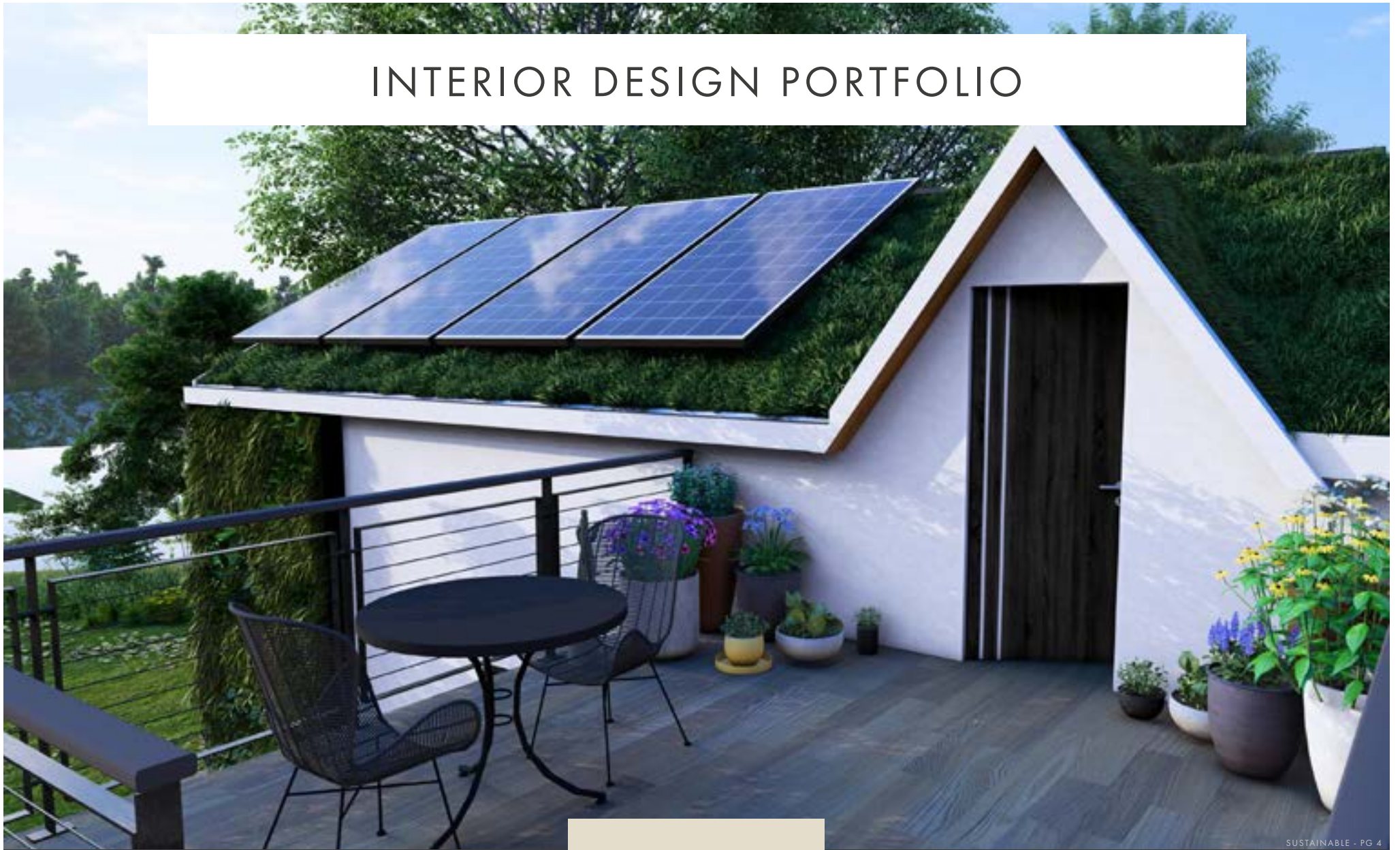


# INTERIOR DESIGN PORTFOLIO



SUSTAINABLE - PG 4

COLLECTION 2024

SOPHIA  
ETZKORN  
INTERIORS

[WWW.SOPHIAETZKORN.DESIGN](http://WWW.SOPHIAETZKORN.DESIGN)

Welcome to Sophia Etzkorn Interiors, and welcome to my portfolio. I am very honored to be able to introduce my work to you, thank you for reading. I have spent the last two years creating various art pieces and building my portfolio, I hope you enjoy!

I am a BAS candidate majoring in Interior Design. My deep passion for art has been with me my entire life and I carry a deep love for reading, music, baking, sewing, crocheting, fashion, and spending quality time with my loved ones. Many of these hobbies were taught to me and cultivated by my grandmother and great grandmother, two incredibly strong women who have been wonderful role models for me and have played a large role in who I am today.

My love for art has guided my academic journey and has allowed me to build a solid foundation in a variety of interior design skills, I am well versed in the digital work-flow. My professional goal is to specialize in residential design and 3D Visualizations. I am currently pursuing LEED certification.

In addition to my technical skills, I approach my work with dedication, optimism and a detail-oriented outlook, which ensures high quality results. I thrive in team settings, and strongly value positive workplace relationships and collaboration. My current position at Statements Tile & Stone allows me to interact with clients and colleagues which provides me with numerous learning opportunities that allow me to grow and improve. I am excited to contribute my skills and passion for design to the design field, and work alongside others to bring to life projects that make a meaningful impact in the lives of others.



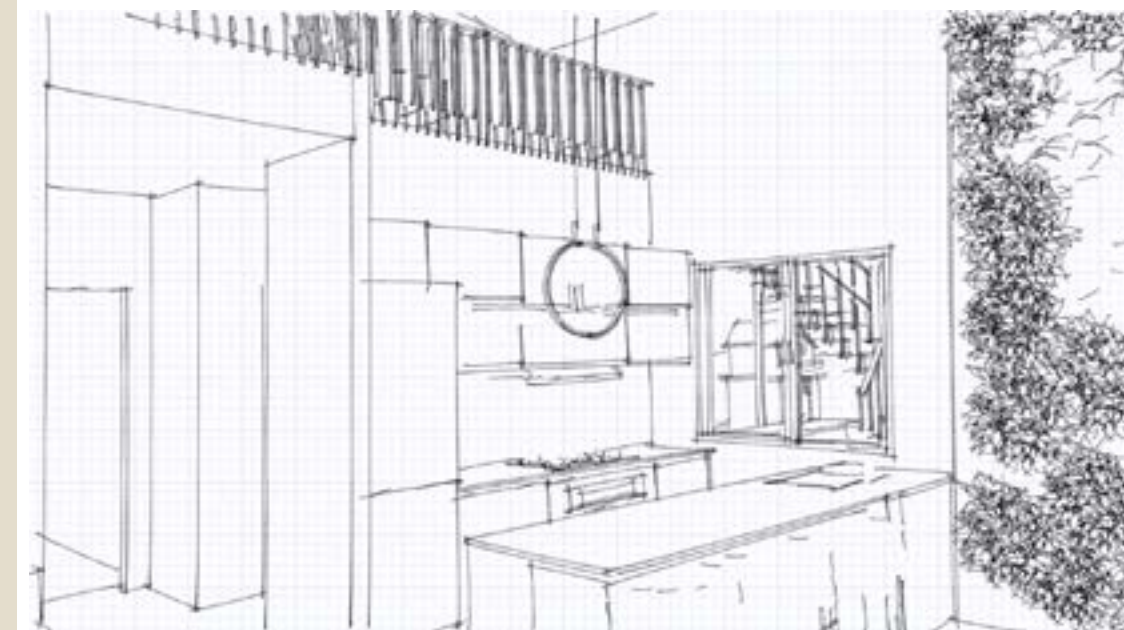
# CONTENTS

SUSTAINABLE	● ● ●	04
RESIDENTIAL	● ● ●	06
COMMERCIAL	● ● ●	08
HAND DRAWING	● ● ●	10
DIGITAL ART	● ● ●	12
PHOTOGRAPHY	● ● ●	14





SUSTAINABLE



## PROJECT DESCRIPTION

The project was designing a tiny home that is both functional and Aesthetically pleasing with limited square footage. The Main Challenges were maximizing the space utilization, ensuring that there was ample seating without obstructing the walkways, and integrating sustainable features seamlessly into the space.

To address these challenges, extensive research was conducted into Space-saving techniques and sustainable design principles. The Design Concept focuses on the utilization of hidden and multi-purpose storage systems, seamless white walls, lofted ceilings, and floor-to-ceiling windows to make the space feel larger and more in touch with the natural environment. Design tools like CAD software were used to strategically arrange the kitchen and seating areas, which allowed for the inclusion of a walk-up bar for exterior access, optimizing flow and space usage.

The Sustainable components were approached by integrating low water usage plumbing fixtures, energy efficient lighting and appliances, a Grey water recycling system, solar panels, and a living roof/green walls for temperature control and food production. Collaboration with suppliers for sustainably and locally sourced materials further enhances the sustainable aspects of the design.



## RESIDENTIAL



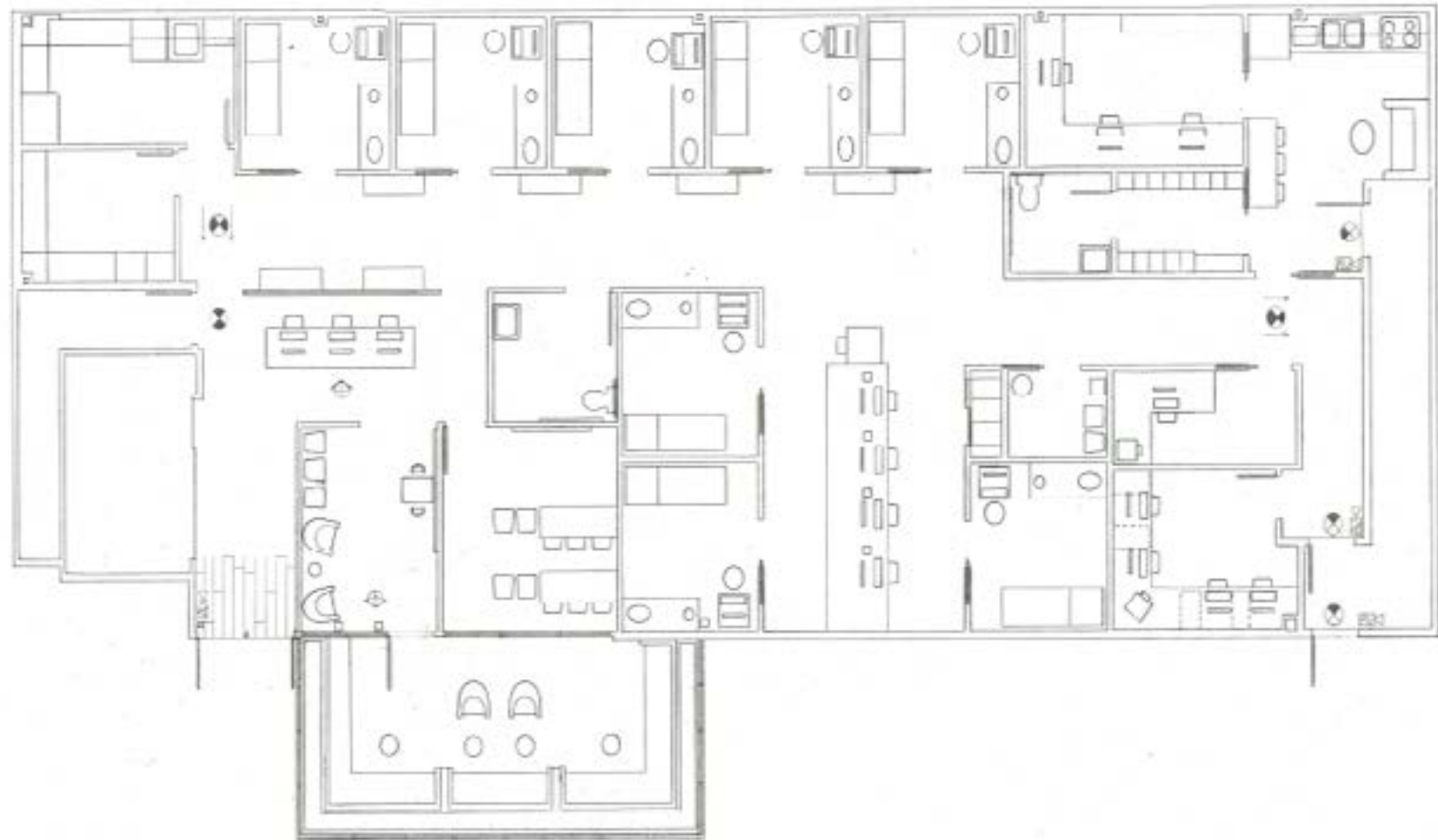
### PROJECT DESCRIPTION

For this design, wooden beams were used to emphasize the lofted ceilings while simultaneously visually anchoring them, allowing the space to feel enclosed without feeling cramped. A cohesive look was achieved by extending the wood tone from the beams to the kitchen cabinetry, fireplace and tables. Visual unity in the space continued to be achieved by pulling the marble slabs from the kitchen counters into the living room and master bathroom.

The furniture layout creates an unobstructed view of the space, enhancing the room's visual size, and was achieved by keeping the built-ins flush with the walls and selecting furniture upholstery that matches the tones around it. The primary bathroom used a similar visual approach, using all glass walls to divide the space while preserving its visual size.

Materials like walnut, ivory wall paint, and multi-surface porcelain slabs in both naturally textured warm grey, and polished calacatta gold were carefully chosen to create a feeling of warmth and coziness, bringing a touch of nature indoors while maintaining a modern and streamlined design.





### PROJECT DESCRIPTION

#### Brief Overview:

- Open design concept in an organic modern design style
- High performance traffic flow in main space with ample seating options
- Living wall focal piece
- Large enclosed indoor-outdoor space with seamless pocket glass walls
- Sensory friendly features in the waiting area
- Final square footage: 3,313 sq.ft

The biggest design challenge was to ensure that the entire space was fully accessible and met all the needs of the target audience while still remaining visually cohesive. Light walls and large windows were used to make the space feel larger and organic tones and features were used to evoke a feeling of calm.

Another large challenge was to provide enough functional seating in the space while keeping the walkways clear. This was achieved by fully enclosing the outdoor space and turning it into a fully functioning secondary waiting room, and placing additional seating in high traffic areas.

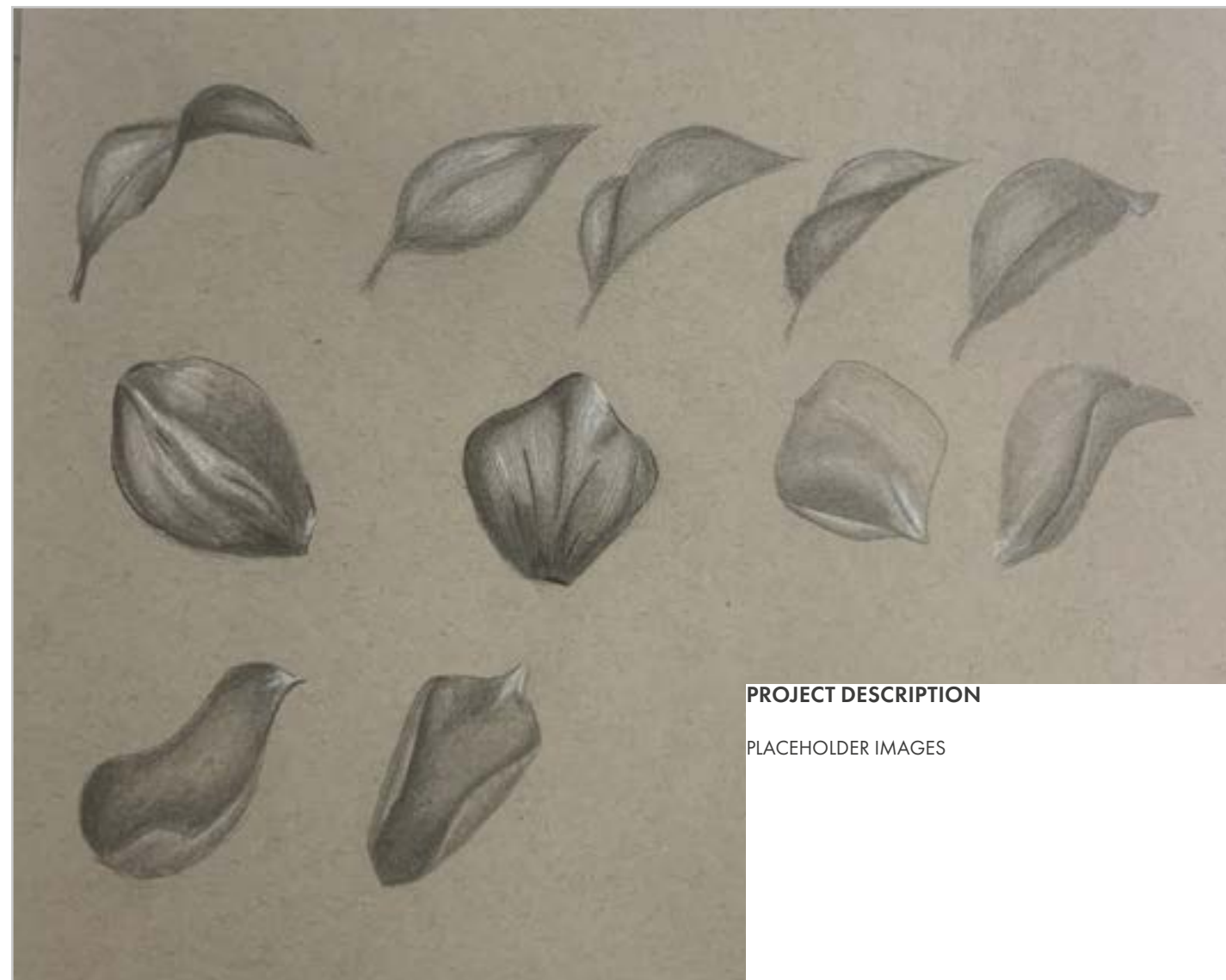
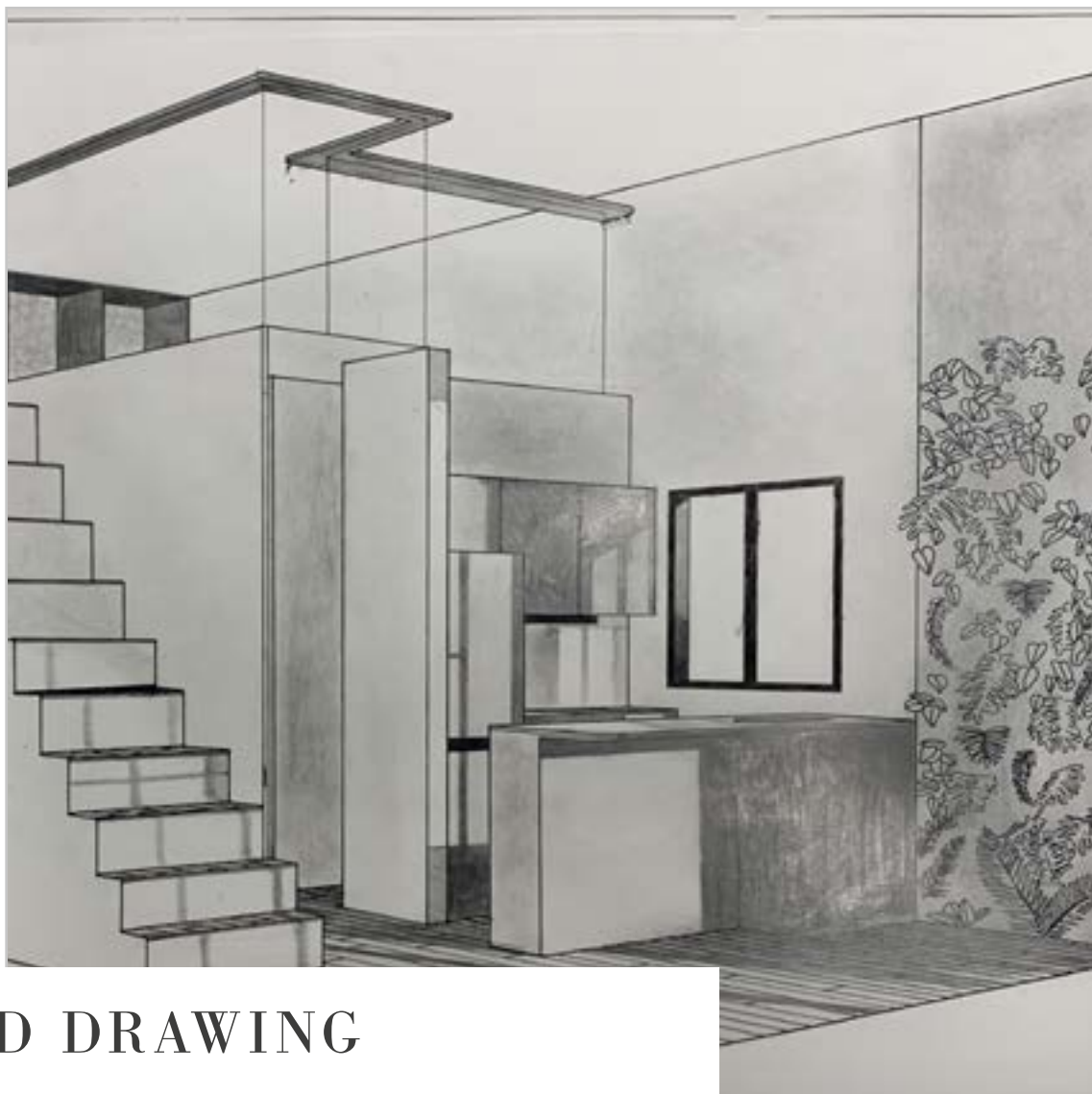
Another challenge that was addressed in the design was avoiding making the space feel too much like a children's play space, and ensuring that the design appeals to all patient age groups. This was done by using a variety of color schemes and different murals in each of the exam rooms, with half of them appealing to the child patients and half appealing to the teen patients.







## HAND DRAWING



### PROJECT DESCRIPTION

PLACEHOLDER IMAGES







## DIGITAL ART

### PROJECT DESCRIPTION

These were personal projects, pursued purely for the enjoyment of completing them, and they were all completed using Procreate. The artwork on the left mimics a painting style similar to Jussi Pöyhönen, using unblended brush strokes and larger swaths of color.

The torso drawing and mouth were done for anatomical and color theory practice, and along with the rose, were intended to appear like a mix between airbrushed and painted. Lastly the angel drawing was done as practice for Illustrative line art.







## PHOTOGRAPHY



### PROJECT DESCRIPTION

These photographs were captured over the course of several years, reflecting my deep personal interest in photography. My subjects typically include people, nature scenes and animals. I find I particularly enjoy photographing moving subjects, finding the challenge incredibly rewarding when I get positive results.





SOPHIA  
ETZKORN  
INTERIORS

